

# RICHARDSON AREA BANDS

# music theory packet



NAME: \_\_\_\_\_

BAND: \_\_\_\_\_

# NOTES & RESTS

Notes are symbols for \_\_\_\_\_ Rests are symbols for \_\_\_\_\_



\_\_\_\_\_  
\_\_\_\_\_ beats



\_\_\_\_\_  
\_\_\_\_\_ beats



\_\_\_\_\_  
\_\_\_\_\_ beats



\_\_\_\_\_  
\_\_\_\_\_ beats



\_\_\_\_\_  
\_\_\_\_\_ beat



\_\_\_\_\_  
\_\_\_\_\_ beat

© dak



\_\_\_\_\_  
\_\_\_\_\_ beat



\_\_\_\_\_  
\_\_\_\_\_ beat








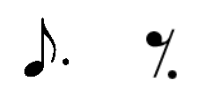



\_\_\_\_\_  
\_\_\_\_\_ beat



\_\_\_\_\_  
\_\_\_\_\_ beat

# RHYTHM BEAT CHART

How many beats are the notes worth in different time signatures?

	<b>C</b> $\frac{4}{4}$ $\frac{3}{4}$ $\frac{2}{4}$ $\frac{?}{4}$	<b>C</b> $\frac{2}{2}$ $\frac{4}{2}$ $\frac{?}{2}$	$\frac{3}{8}$ $\frac{6}{8}$ $\frac{9}{8}$ $\frac{12}{8}$ $\frac{?}{8}$
 Whole Note	4	2	8
 Dotted Half Note	3	1 ½	6
 Half Note	2	1	4
 Dotted Quarter Note	1 ½	¾	3
 Quarter Note	1	½	2
 Dotted Eighth Note	¾	¾	1 ½
 Eighth Note	½	¼	1
 Sixteenth Note	¼	⅛	½
 Thirty-Second Note	⅛	⅙	¼

**ALPHA MASTER**

ABCDEFGFGA

BCDEFGAB

CDEFGABC

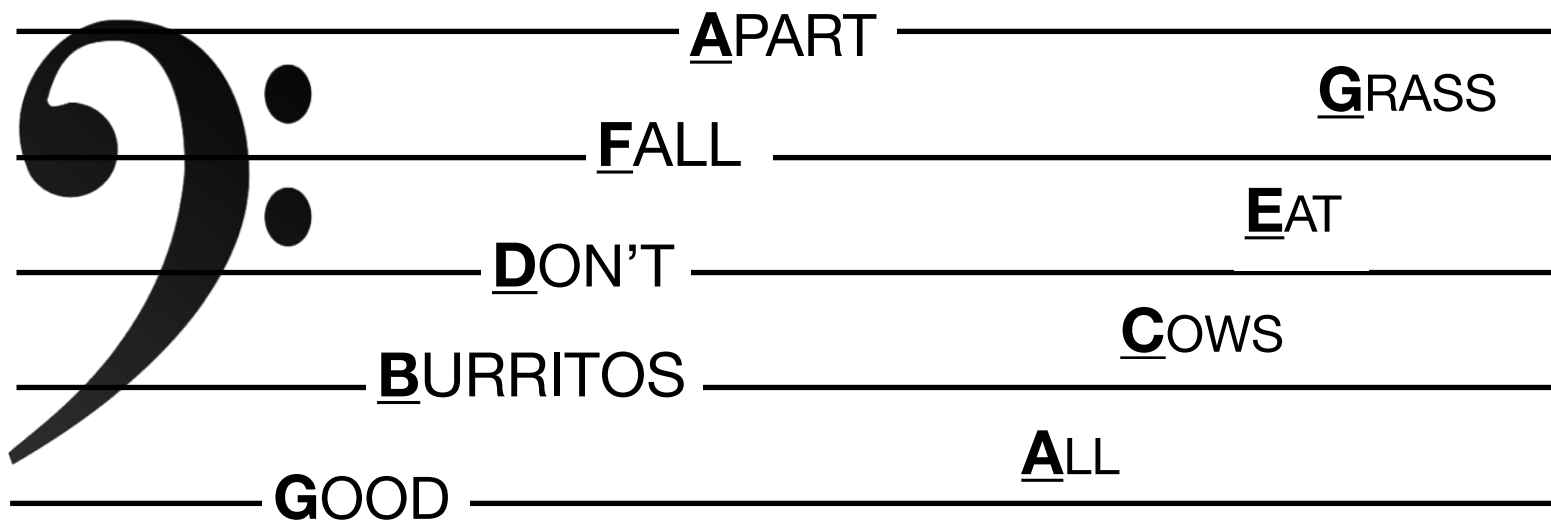
DEFGABCD

EFGABCDE

FGABCDEF

GABCDEFG

# BASS CLEF LINES & SPACES



The letter names of the lines of the bass clef from the bottom line to the top line are

**G B D F A**

One way to remember the names of the lines is the sentence

“Good Burritos Don't Fall Apart”

The letter names of the spaces of the bass clef from the bottom space to the top space are

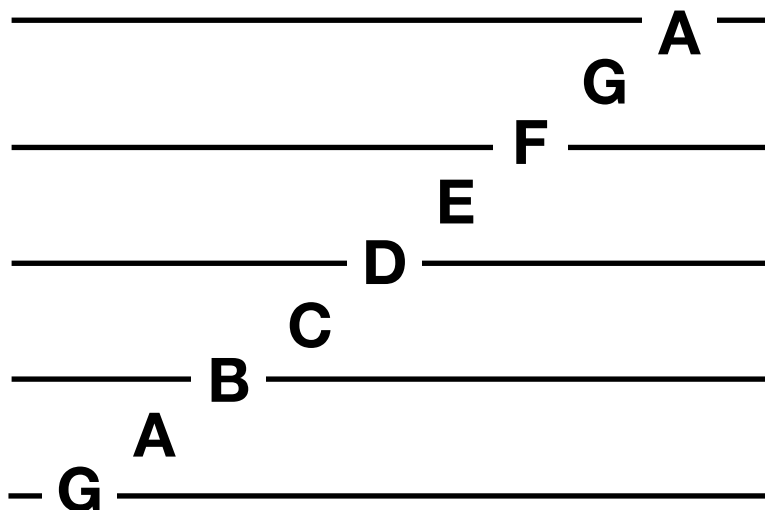
**A C E G**

One way to remember the names of the spaces is the sentence

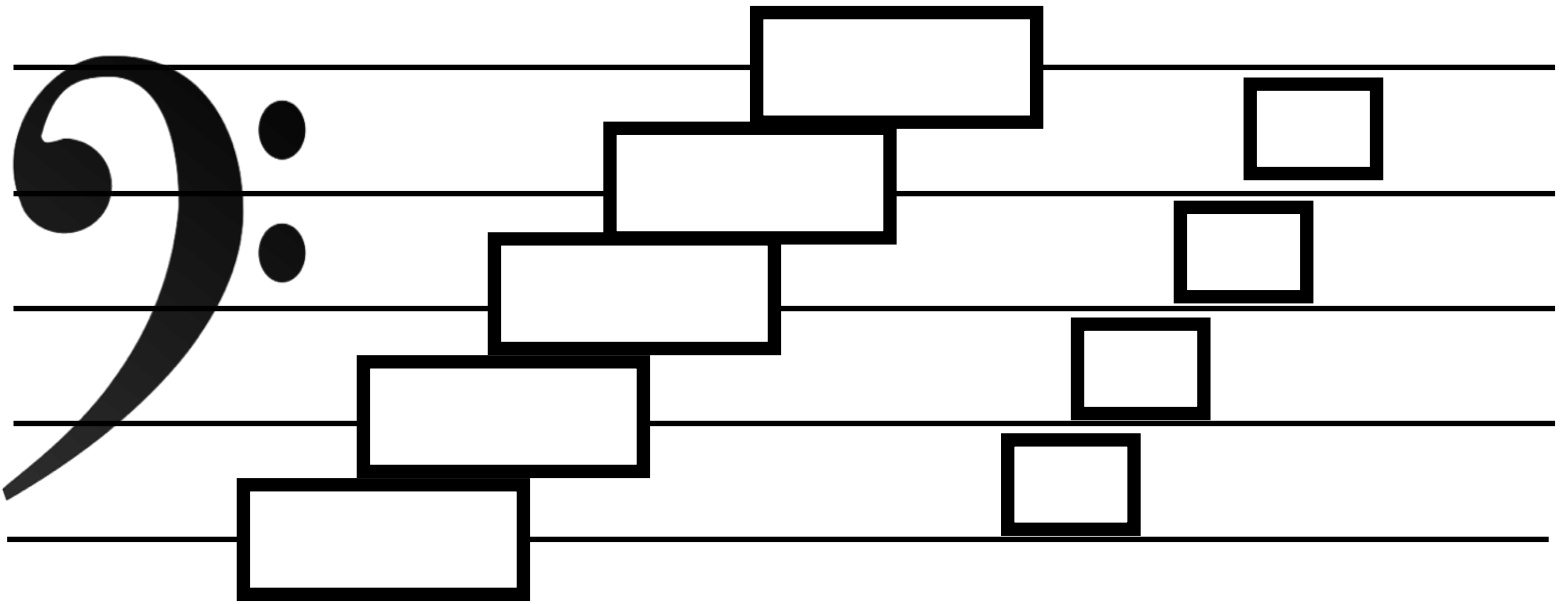
“All Cows Eat Grass”

The letter names of the lines and spaces combined is the musical alphabet beginning on “G.”

**G A B C D E F G A**



# BASS CLEF LINES & SPACES



The letter names of the lines of the bass clef from the bottom line to the top line are

\_\_\_\_\_

One way to remember the names of the lines is the sentence

\_\_\_\_\_

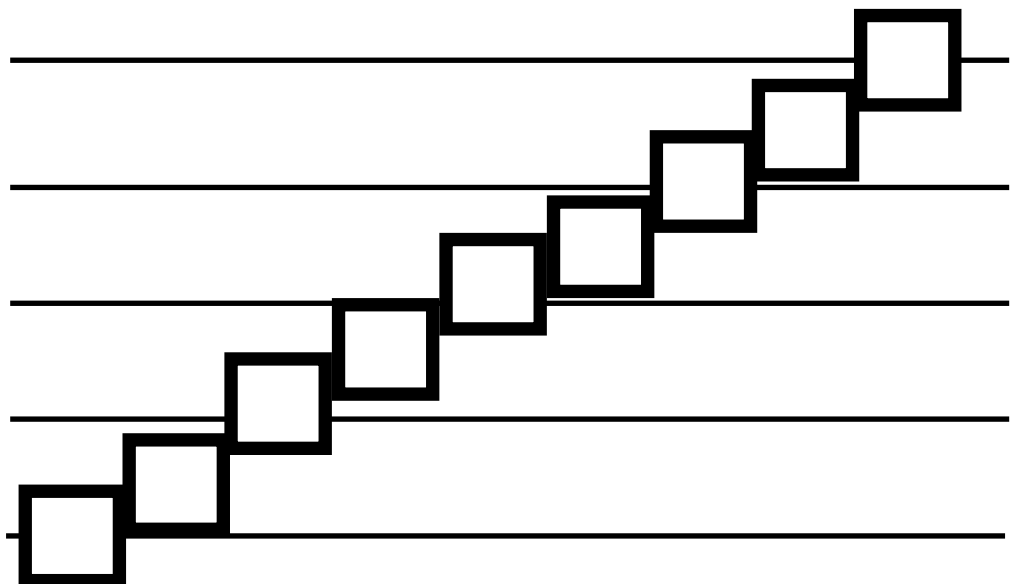
The letter names of the spaces of the bass clef from the bottom space to the top space are

\_\_\_\_\_

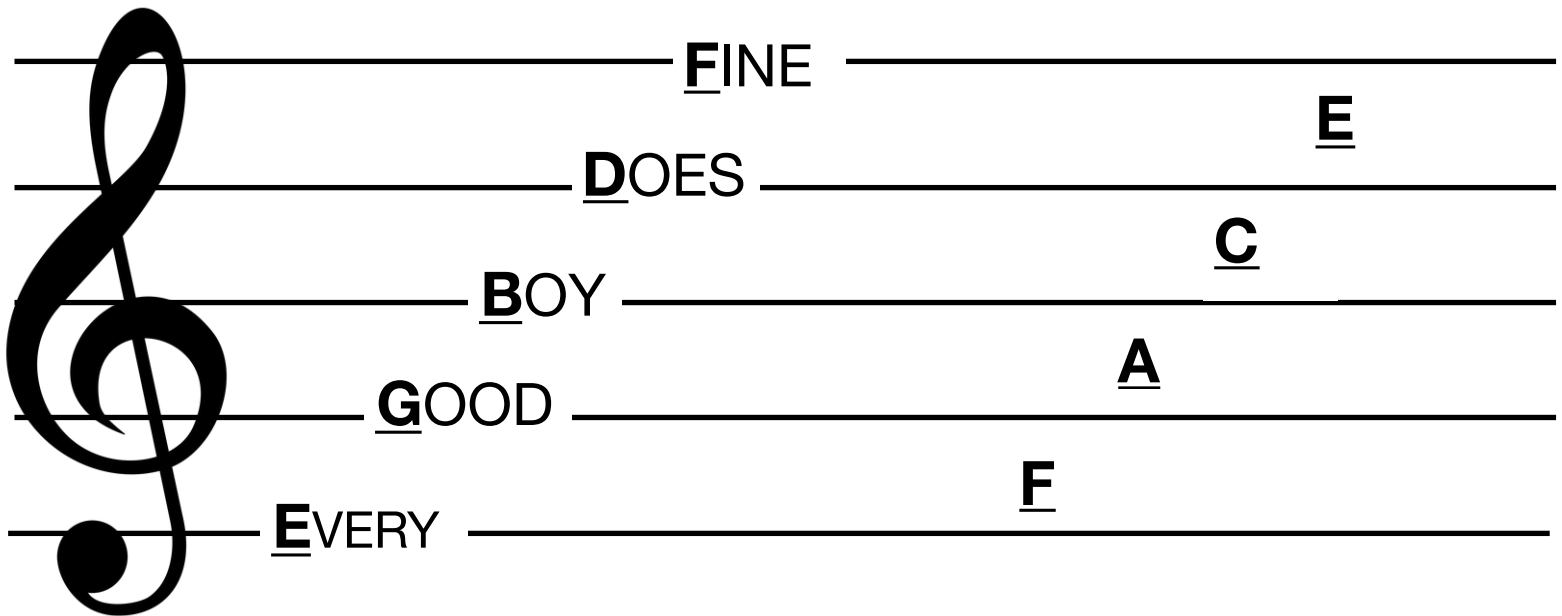
One way to remember the names of the spaces is the sentence

\_\_\_\_\_

The letter names of the lines and spaces combined is the musical alphabet beginning on \_\_\_\_\_



# TREBLE CLEF LINES & SPACES



The letter names of the lines of the treble clef from the bottom line to the top line are

**E G B D F**

One way to remember the names of the lines is the sentence

“**E**very **G**ood **B**oy **D**oes **F**ine

The letter names of the spaces of the treble clef from the bottom space to the top space are

**F A C E**

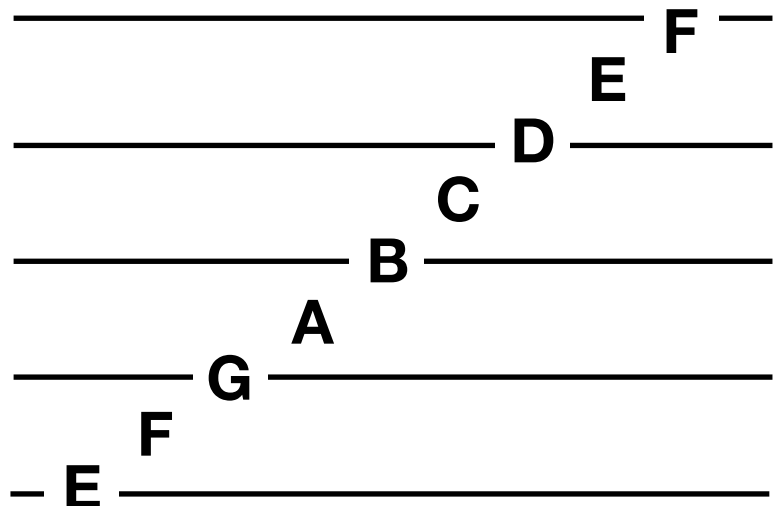
One way to remember the names of the spaces is to see that they spell

“**FACE**”

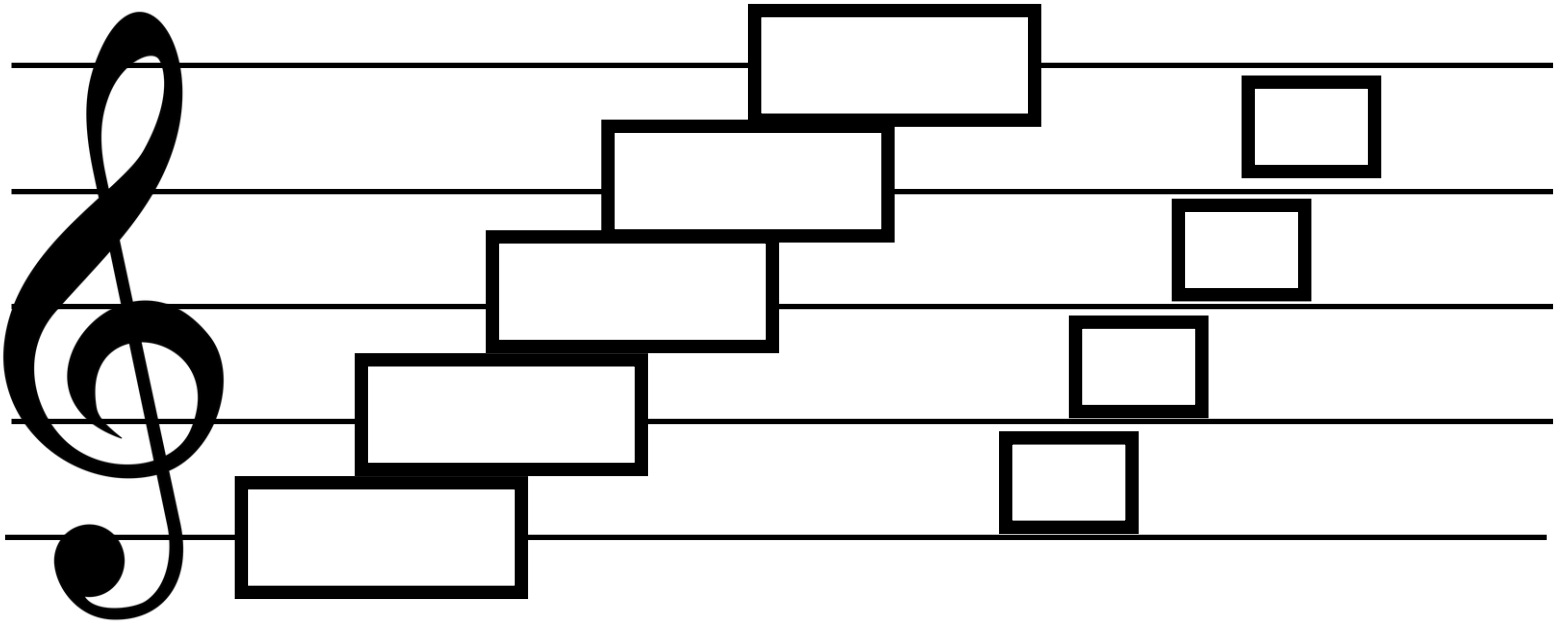
Remember that the word “space” rhymes with “face”

The letter names of the lines and spaces combined is the musical alphabet beginning on “E.”

**E F G A B C D E F**



# TREBLE CLEF LINES & SPACES



The letter names of the lines of the treble clef from the bottom line to the top line are

\_\_\_\_\_

One way to remember the names of the lines is the sentence

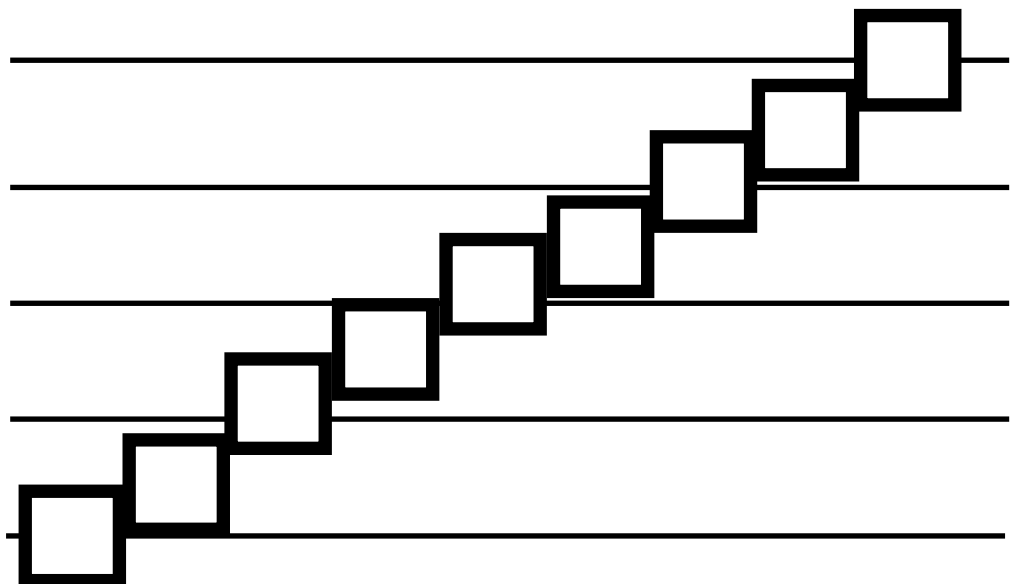
\_\_\_\_\_

The letter names of the spaces of the treble clef from the bottom space to the top space are

One way to remember the names of the spaces is to see that they spell

\_\_\_\_\_

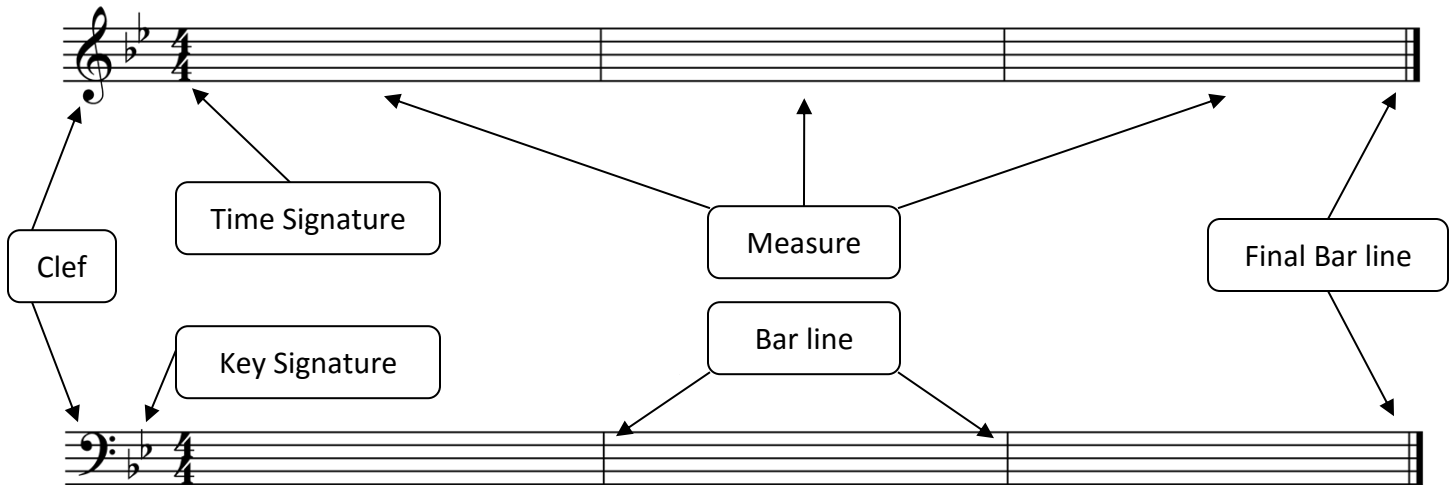
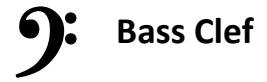
The letter names of the lines and spaces combined is the musical alphabet beginning on \_\_\_\_\_





# MUSIC THEORY

## Staff Attributes



- The individual cell in which music is notated is called a \_\_\_\_\_.
- A \_\_\_\_\_ is the dividing line between measures.
- You know that a piece of music has ended because there is a different kind of bar line, called a \_\_\_\_\_ in the last measure of the piece of music.

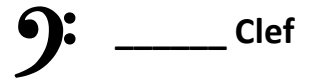
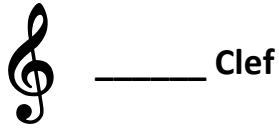
## Time Signatures

**Top Number** } Tells how many beats per measure      **4** } 4 beats per measure

**Bottom Number** } Tells what note value gets the beat      **4** } ♩ Quarter note gets the beat

# MUSIC THEORY

## Staff Attributes



Fill in the Blank

- The individual cell in which music is notated is called a \_\_\_\_\_.
- A \_\_\_\_\_ is the dividing line between measures.
- You know that a piece of music has ended because there is a different kind of bar line, called a \_\_\_\_\_ in the last measure of the piece of music.

## Time Signatures

<b>Top Number</b>	}	Tells: _____ _____	<b>4</b>	}	_____ per measure
<b>Bottom Number</b>	}	Tells: _____ _____	<b>4</b>	}	_____ gets the beat

# MUSIC THEORY

## Sharps and Flats

**Flat:**  $\flat$

Lowers a note  $\frac{1}{2}$  step

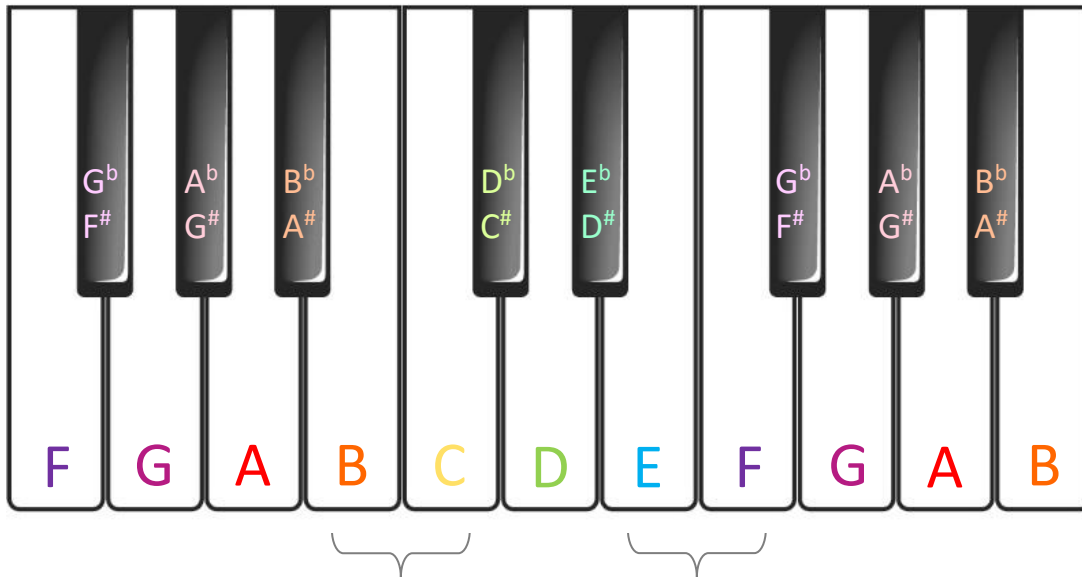
*If your bike has a flat tire, it sinks lower.*

**Sharp:**  $\sharp$

Raises a note  $\frac{1}{2}$  step

*If you sit on a sharp tack, you jump up.*

**$\frac{1}{2}$  Step:** The smallest distance between 2 notes



These notes are special. (B ↔ C) & (E ↔ F) DO NOT have a black key (sharp or flat) between them. So, the distance between these sets of notes is one half-step.

### Enharmonic:

- Two notes that have the SAME fingering and sound but a DIFFERENT name.  
Ex.  $A^\sharp$  and  $B^\flat$  are **enharmonic** to one another.  
*Can you figure out some other enharmonic note pairs?*

### Chromatic Scale:

- Scale in half steps. We use sharps ( $\sharp$ ) as the scale **ascends** (goes up) and we use flats ( $\flat$ ) as the scale **descends** (comes down).

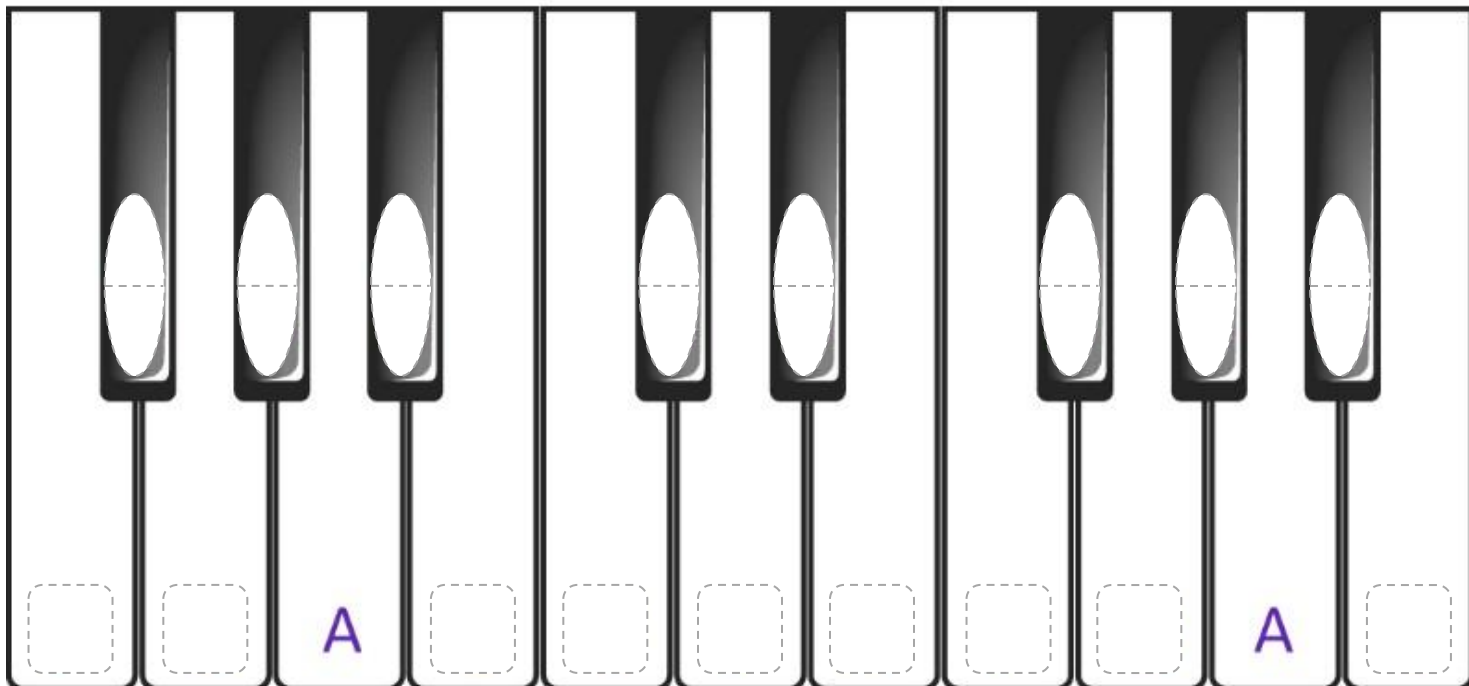
**Ascending:** C   C $\sharp$    D   D $\sharp$    E   F   F $\sharp$    G   G $\sharp$    A   A $\sharp$    B   C

**Descending:** C   D $\flat$    D   E $\flat$    E   F   G $\flat$    G   A $\flat$    A   B $\flat$    B   C

# MUSIC THEORY

## Keyboard Note Labeling

Fill in the blanks. Each black key will get a sharp note and a flat note.



## Enharmonic Matching

Draw a line to connect the enharmonic notes

A<sup>#</sup>

E<sup>b</sup>

C<sup>#</sup>

G<sup>b</sup>

D<sup>#</sup>

B<sup>b</sup>

F<sup>#</sup>

A<sup>b</sup>

G<sup>#</sup>

D<sup>b</sup>

# MUSIC THEORY

## Key Signatures



**Order of Flats:** ♭  
 B E A D G C F  
 "BEAD-GCF"

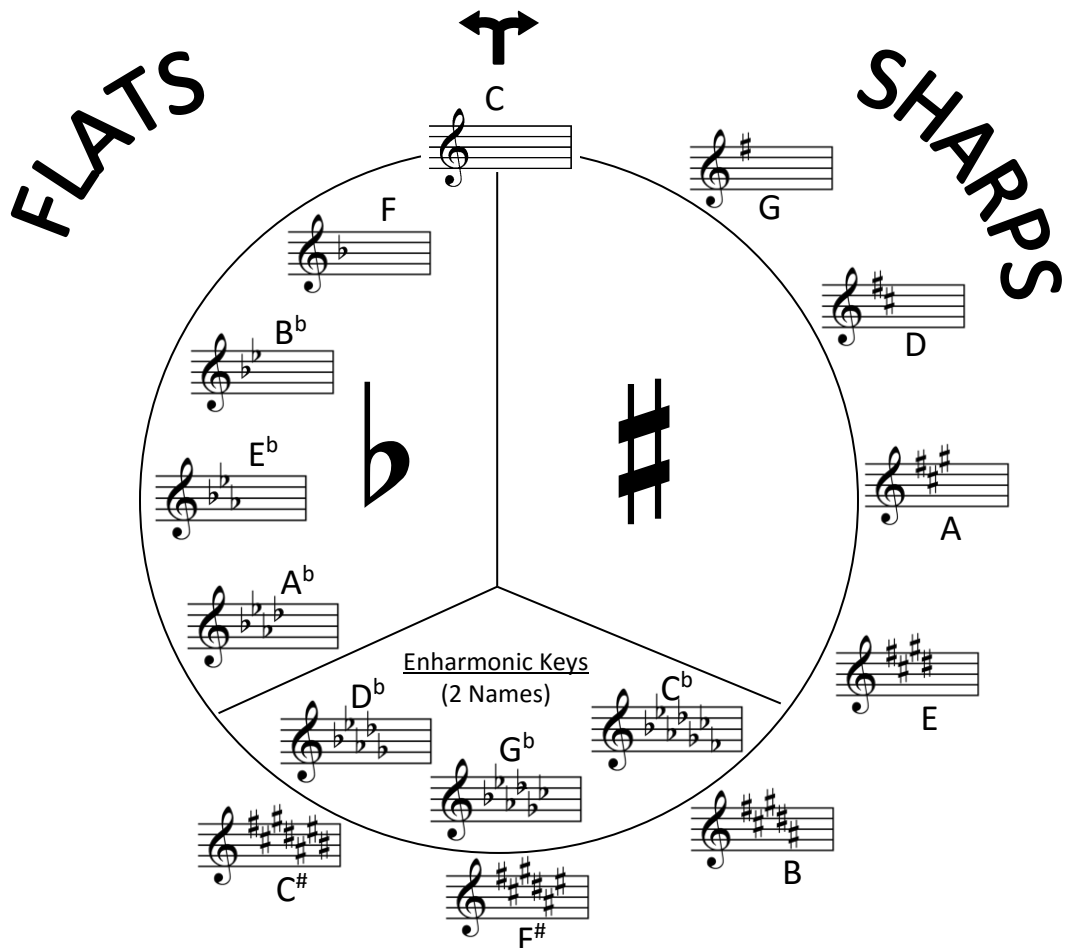


**Order of Sharps:** ♯  
 F C G D A E B  
 "Fat Cats Go Down Alleys Eating Birds"



*Notice that the order of flats and sharps is opposite.*

### CIRCLE OF FIFTHS – TREBLE CLEF



# KEY SIGNATURES

Key of C -   0   sharps   0   flats

Key of F - 1 flat      b

Key of Bb - 2 flats      b      b

Key of Eb - 3 flats      b      b      b

Key of Ab - 4 flats      b      b      b      b

Key of Db - 5 flats      b      b      b      b      b

Key of Gb - 6 flats      b      b      b      b      b      b

Key of C -   0   sharps   0   flats

Key of G - 1 sharp      #

Key of D - 2 sharps      #      #

Key of A - 3 sharps      #      #      #

Key of E - 4 sharps      #      #      #      #

Key of B - 5 sharps      #      #      #      #      #

Key of F# - 6 sharps      #      #      #      #      #      #

# RHYTHM PAGE 1

 = Quarter Rest



# RHYTHM PAGE 2

$\frac{2}{4}$  = 2 beats per measure

A.  $\frac{4}{4}$

B.  $\frac{4}{4}$

C.  $\frac{4}{4}$

D.  $\frac{4}{4}$

E.  $\frac{4}{4}$

F.  $\frac{2}{4}$

G.  $\frac{2}{4}$

H.  $\frac{2}{4}$

I.  $\frac{2}{4}$

J.  $\frac{2}{4}$



# RHYTHM PAGE 3

😊 1/4 | ♪ ♪ ♪ ♪ | ♪ ♪ ♪ ♪ | ♪ ♪ | ♪. ♪ | ♪ ♪ ♪ ♪ | ♪ ♪ ♪ ♪ | ♪ ♪ ♪ | ♪. |

JIVE 2/4 | ♪ ♪ ♪ ♪ | ♪ ♪ ♪ ♪ | ♪ ♪ ♪ ♪ | ♪ ♪ ♪ ♪ | ♪ ♪ ♪ ♪ | ♪ ♪ ♪ ♪ | ♪ ♪ ♪ ♪ | ♪ ♪ ♪ ♪ |

HARRY 3/4 | ♪ ♪ ♪ | ♪ ♪ ♪ | ♪ ♪ ♪ | ♪ ♪ ♪ | ♪ ♪ ♪ | ♪ ♪ ♪ | ♪ ♪ ♪ | ♪. ♪ | ♪. |

RANGERS 4/4 | ♪ ♪ ♪ | ♪ ♪ ♪ | ♪. ♪ | ♪ ♪ | ♪ ♪ | ♪ ♪ ♪ | ♪ ♪ ♪ | ♪ ♪ ♪ | ♪ ♪ ♪ |

COWBOYS 5/4 | ♪ ♪ | ♪. ♪ | ♪ ♪ ♪ | ♪ ♪ | ♪ ♪ | ♪ ♪ ♪ | ♪. ♪ | ♪ ♪ ♪ | ♪. |

GIANTS 6/4 | ♪ ♪ ♪ | ♪ ♪ ♪ | ♪ ♪ ♪ | ♪ ♪ ♪ | ♪ ♪ ♪ | ♪ ♪ ♪ | ♪ ♪ ♪ | ♪ ♪ ♪ |

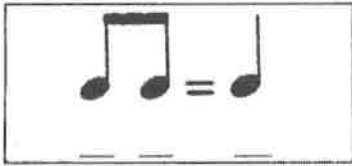
STEELERS 7/4 | ♪ ♪ ♪ | ♪ ♪ ♪ | ♪ ♪ ♪ | ♪ ♪ ♪ | ♪ ♪ ♪ | ♪ ♪ ♪ | ♪ ♪ ♪ | ♪ ♪ ♪ |

TGIF 8/4 | ♪ ♪ | ♪ ♪ | ♪ ♪ | ♪ ♪ | ♪ ♪ | ♪ ♪ | ♪ ♪ | ♪ ♪ |

BURGERS 9/4 | ♪ ♪ | ♪ ♪ | ♪ ♪ | ♪ ♪ | ♪ ♪ | ♪ ♪ | ♪ ♪ | ♪ ♪ |

FRIES 10/4 | ♪ ♪ | ♪ ♪ | ♪ ♪ | ♪ ♪ | ♪ ♪ | ♪ ♪ | ♪ ♪ | ♪ ♪ |

# RHYTHM PAGE 4



A.  $\frac{4}{4}$  [Musical staff with 8 eighth notes beamed in pairs]

B.  $\frac{4}{4}$  [Musical staff with 4 eighth notes, a quarter rest, 4 eighth notes, and a quarter rest]

C.  $\frac{4}{4}$  [Musical staff with 4 eighth notes, a quarter rest, 4 eighth notes, and a quarter rest]

D.  $\frac{4}{4}$  [Musical staff with 4 eighth notes, a quarter rest, 4 eighth notes, and a quarter rest]

E.  $\frac{2}{4}$  [Musical staff with 4 eighth notes, a quarter rest, 4 eighth notes, and a quarter rest]

F.  $\frac{2}{4}$  [Musical staff with 4 eighth notes, a quarter rest, 4 eighth notes, and a quarter rest]

G.  $\frac{2}{4}$  [Musical staff with 4 eighth notes, a quarter rest, 4 eighth notes, and a quarter rest]

H.  $\frac{2}{4}$  [Musical staff with 4 eighth notes, a quarter rest, 4 eighth notes, and a quarter rest]

I.  $\frac{2}{4}$  [Musical staff with 4 eighth notes, a quarter rest, 4 eighth notes, and a quarter rest]

J.  $\frac{2}{4}$  [Musical staff with 4 eighth notes, a quarter rest, 4 eighth notes, and a quarter rest]

# RHYTHM PAGE 5

1. WHALES

4/4 

2. NEVER

4/4 

3. PRETTY

4/4 

4. SPECIAL

4/4 

5. PINK

4/4 

6. BRAIN

4/4 

1. AVENGERS

4/4 

2. FLORIDA

4/4 

3. DISNEY

4/4 

4. SPARKLE

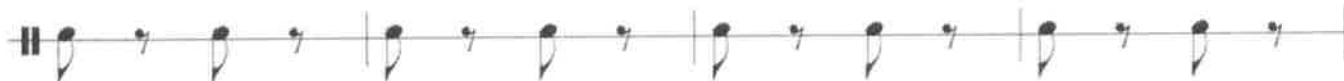
4/4 

# I CAN COUNT 8TH RESTS

Just 8th Notes



Downbeats



Upbeats



I Like Pie



Nabisco



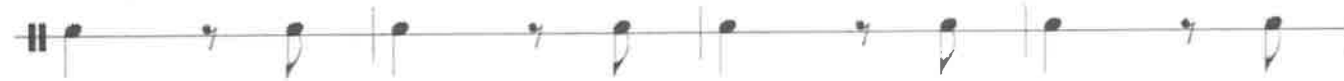
Oranges and Apples



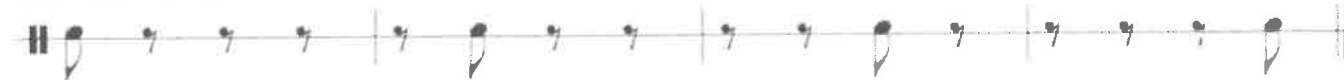
Cheese, Ham and Cheese



Blue, Light Blue



It Looks Difficult But It's Not



# I CAN COUNT DOTTED QUARTER NOTES

Lemons



Cherry Coke



Chewbacca



Apples and Bananas



Trap Music



Six Flags



Batman



Avengers



Cotton Candy



# RHYTHM PAGE 6

ORANGE 1  $\frac{4}{4}$  d. d. | d. d. |  $\underline{d. d. d. d.}$  | d. d. d. | d. d. | d. d. | d. d. d. d. | d. d. d. ||

RAPUNZEL 2  $\frac{4}{4}$  d. d. d. d. | d. d. d. d. | d. d. d. d. | d. d. d. d. |  $\underline{d. d. d. d.}$  | d. d. d. d. | d. d. d. d. ||

MOUSE 3  $\frac{4}{4}$  d. d. d. | d. d. d. | d. d. d. d. |  $\circ$  | d. d. d. d. | d. d. d. d. | d. d. d. d. ||

DR PEPPER 4  $\frac{4}{4}$  d. d. d. | d. d. d. | d. d. d. d. | d. d. d. | d. d. d. d. | d. d. d. d. | d. d. d. d. |  $\circ$  ||

WUZZA 5  $\frac{4}{4}$   $\underline{d. d. d. d.}$  | d. d. d. |  $\underline{d. d. d. d.}$  | d. d. d. | d. d. d. d. | d. d. d. d. | d. d. d. d. | d. d. ||

POWER 6  $\frac{4}{4}$   $\underline{d. d. d. d. d. d.}$  | d. d. d. | d. d. d. d. |  $\underline{d. d. d. d.}$  | d. d. d. d. | d. d. d. d. | d. d. d. d. | d. d. ||



MAGIC 7  $\frac{3}{4}$  d. d. d. | d. d. d. | d. d. d. | d. | d. d. | d. d. d. | d. d. d. | d. d. d. ||

THRONE 8  $\frac{3}{4}$  d. d. d. | d. d. d. | d. d. d. | d. d. d. | d. | d. d. | d. d. d. | d. d. d. ||

SKY 9  $\frac{2}{4}$  d. d. | d. d. |  $\underline{d. d. d. d.}$  | d. | d. d. | d. d. | d. d. | d. d. ||

OCHO 10  $\frac{2}{4}$  d. d. | d. d. | d. d. | d. d. | d. d. | d. d. | d. d. | d. d. ||

# RHYTHM PAGE 7

1  $\frac{4}{4}$    
**Tap** 

2  $\frac{4}{4}$  

3  $\frac{4}{4}$  

4  $\frac{4}{4}$  

5  $\frac{4}{4}$  

6  $\frac{4}{4}$  

7  $\frac{3}{4}$  

8  $\frac{3}{4}$  

9  $\frac{2}{4}$  

# RHYTHM PAGE 8

1  $\frac{4}{4}$    
Tap 

2  $\frac{4}{4}$  

3  $\frac{4}{4}$  

4  $\frac{4}{4}$  

5  $\frac{4}{4}$  

6  $\frac{3}{4}$  

7  $\frac{3}{4}$  

8  $\frac{2}{4}$  



# RHYTHM PAGE 9

1  $\frac{4}{4}$    
 Tap 

2  $\frac{4}{4}$  

3  $\frac{4}{4}$  

4  $\frac{4}{4}$  

5  $\frac{4}{4}$  

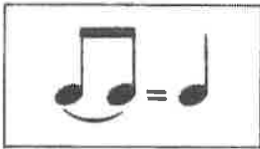
6  $\frac{3}{4}$  

7  $\frac{3}{4}$  

8  $\frac{2}{4}$  

# RHYTHM PAGE 10

Syncopation = accent off the beat.



A.  $\frac{4}{4}$

B.  $\frac{4}{4}$

C.  $\frac{4}{4}$

D.  $\frac{2}{4}$

E.  $\frac{3}{4}$

F.  $\frac{3}{4}$

G.  $\frac{3}{4}$

H.  $\frac{4}{4}$

I.  $\frac{4}{4}$

J.  $\frac{4}{4}$

# I CAN COUNT SIXTEENTH NOTES

## 16 OF THEM

Musical notation for '16 OF THEM' in 4/4 time. It consists of four groups of four sixteenth notes each, with a slur over each group. The notes are on a single line, and the lyrics '1 e + a' are written below the first group.

## HORSE GALLOPING

Musical notation for 'HORSE GALLOPING' in 4/4 time. It consists of four groups of four sixteenth notes each, with a slur over each group. The notes are on a single line, and the lyrics '1e + a 2e + a 3e + a 4e + a' are written below the first group.

## DO OR DIE

Musical notation for 'DO OR DIE' in 4/4 time. It consists of four groups of four sixteenth notes each, with a slur over each group. The notes are on a single line, and the lyrics '1 e +a 2 e +a 3 e +a 4 e +a' are written below the first group.

## MORTAL KOMBAT

Musical notation for 'MORTAL KOMBAT' in 4/4 time. It consists of four groups of four sixteenth notes each, with a slur over each group. The notes are on a single line, and the lyrics '1 e+ a 2 e+ a 3 e+ a 4 e+ a' are written below the first group.

## EZ PZ

Musical notation for 'EZ PZ' in 4/4 time. It consists of four groups of four sixteenth notes each, with a slur over each group. The notes are on a single line, and the lyrics '1e +a 2e +a 3e +a 4e +a' are written below the first group.

## OH, SAY

Musical notation for 'OH, SAY' in 4/4 time. It consists of four groups of four sixteenth notes each, with a slur over each group. The notes are on a single line, and the lyrics '1e+ a 2e+ a 3e+ a 4e+ a' are written below the first group.

## ONE EEEE

Musical notation for 'ONE EEEE' in 4/4 time. It consists of four groups of four sixteenth notes each, with a slur over each group. The notes are on a single line, and the lyrics '1 e+a 2 e+a' are written below the first group.

## STAY WITH THE BEAT

Musical notation for 'STAY WITH THE BEAT' in 4/4 time. It consists of four groups of four sixteenth notes each, with a slur over each group. The notes are on a single line, and the lyrics '1e+a' are written below the first group.



## DO YOU HEAR?

Musical notation for 'DO YOU HEAR?' in 4/4 time. It consists of four groups of four sixteenth notes each, with a slur over each group. The notes are on a single line, and there are accents (>) above each note.

# Music Math - Level 1



(Add the beats)

## Notes

1.  +  = \_\_\_\_\_



2.  +  = \_\_\_\_\_


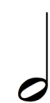
3.  +  = \_\_\_\_\_

4.  +  = \_\_\_\_\_

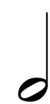
5.  +  = \_\_\_\_\_

6.  +  = \_\_\_\_\_


7.  +  = \_\_\_\_\_



8.  +  = \_\_\_\_\_



9.  +  = \_\_\_\_\_



10.  +  = \_\_\_\_\_



## Rests


11.  +  = \_\_\_\_\_



12.  +  = \_\_\_\_\_



13.  +  = \_\_\_\_\_

14.  +  = \_\_\_\_\_



15.  +  = \_\_\_\_\_

16.  +  = \_\_\_\_\_

17.  +  = \_\_\_\_\_

18.  +  = \_\_\_\_\_

19.  +  = \_\_\_\_\_

20.  +  = \_\_\_\_\_