

ALL-REGION 2020



TRUMPET

Trumpet: *Second Book of Practical Studies for Cornet and Trumpet* Getchell-Hovey

Etude 1: Page 50, No. 98

Play all Eighth = 160-172

Etude 2: Page 60, No. 114

Play all Quarter = 60-72

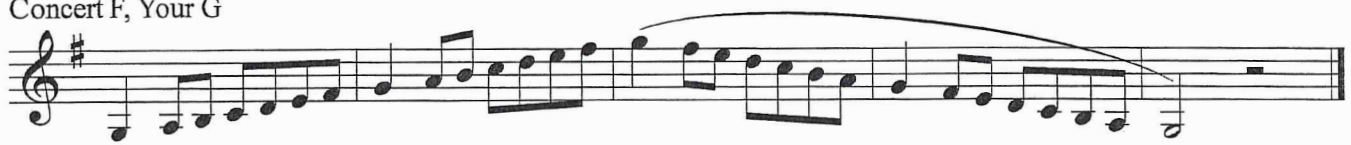
Trumpet

Region 20 Major Scales and Chromatic Scale

Concert Bb, Your C



Concert F, Your G



Concert C, Your D



Concert G, Your A



Concert Db, Your Eb



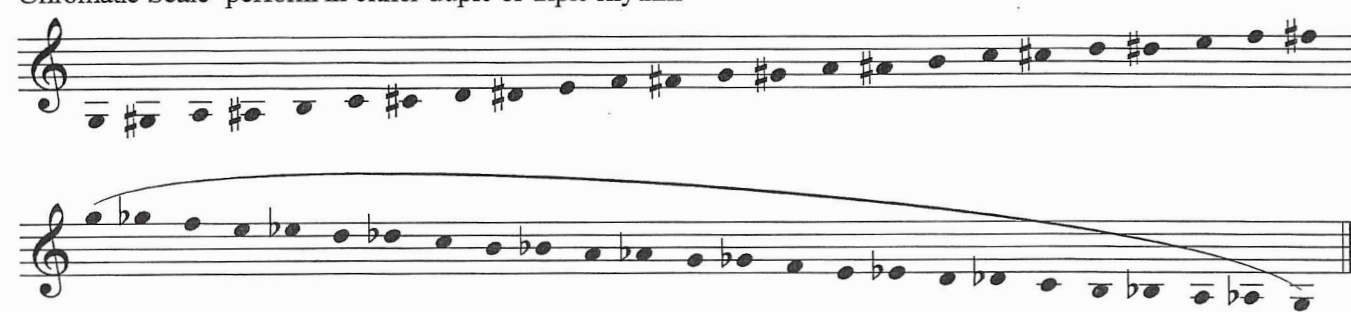
Concert Ab, Your Bb



Concert Eb, Your F



Chromatic Scale- perform in either duple or triple rhythm



2020 Trumpet Etude #1

Getchell
Covey

Trumpet in B \flat

1 2 3 4 5 6

B \flat Tpt.

7 8 9 10 11 12

B \flat Tpt.

13 14 15 16 17 18

B \flat Tpt.

19 20 21 22 23 24

B \flat Tpt.

25 26 27 28 29 30

B \flat Tpt.

31 32 33 34 35 36

B \flat Tpt.

37 38 39 40 41 42

B \flat Tpt.

43 44 45 46 47 48

Detailed description: This image shows the first page of a trumpet etude. It consists of eight staves of music. The first staff is for the 'Trumpet in B \flat ' and contains measures 1 through 6. The remaining seven staves are for 'B \flat Tpt.' and contain measures 7 through 48. The music is written in a single melodic line on a treble clef staff with a key signature of one flat (B \flat) and a 3/8 time signature. The notes are primarily eighth and sixteenth notes, often beamed together in groups. There are some accidentals, including sharps and naturals, scattered throughout the piece. The piece concludes with a final measure (48) that ends with a double bar line and a fermata.

2020 Trumpet Etude #2

Getchell
Hovey

Trumpet in B \flat

B \flat Tpt.

B \flat Tpt.

B \flat Tpt.

B \flat Tpt.

1 2 3 4

5 6 7 8

9 10 11 12

13 14 15 16

17 18 19 20

General Information about Region 20 MS All-Region Auditions for 2020

- Omit all repeats
- If 1st and 2nd endings are printed, omit the first ending and play the second ending without repeating.
- D.C. and D.S. markings are applicable unless specified
- Trills, Turns, and Other Ornamentations should NOT be considered optional
- If you are passing out etudes that have been put into Finale, PLEASE make sure ALL measure numbers align with the actual etudes.
- MUSIC MUST NOT BE DISTRIBUTED AND TAUGHT TO STUDENTS UNTIL AUGUST 1, 2020
- Due to the unexpected educational situations because of COVID19 the 2020 original length etudes have been shortened in length for this year only.
- ALL directors from a campus who enters students into the all-region audition process must be available to judge or assist the all-region auditions and clinic/concert. This is a Region 20 policy.

TMEA Code of Ethics (some things to remember)

- 1.11 Shall recognize that maintaining the integrity of the profession is the responsibility of each member.
- 1.12 Shall build a professional reputation based upon ability and integrity.
- 1.20 Shall be aware of and abide by -existing copyright laws and guard against any infringement thereof.
- 1.23 Shall respect and support colleagues and other school personnel in the proper performance of their duties.
- 2.10 Shall not grant any advantage, deny benefits, or unfairly exclude any student from participation in any program on the basis of race, color, creed, gender, disability, national origin, marital status, political or religious beliefs, family, social or cultural background, or sexual orientation.
- 3.10 Shall model conduct at all times in such a manner as to merit the respect of the public for members of the music education profession.