



Westwood Band Auditions

2023-2024 School Year

Frequently Asked Questions



Q: When will my audition take place?

A: During band class the week of May 8th

Q: Do I have to audition?

A: Yes, all 6th and 7th grade students will audition. This audition is a test grade for all students. Auditions also determine band placement for next year; however, only students who are signed up for band according to the counselor's records will be placed in a band.

Q: What do I play for the audition?

A: The audition will consist of:

- 1) One scale of your choice, as many octaves as you can perform.
- 2) Another scale of your band teacher's choice, as many octaves as you can perform.
- 3) The audition etude (a short piece of music). Play as much as you can with a metronome.
 - a. 6th graders are required to play the first etude
 - b. 7th graders are required to play the first and second etudes
 - c. Students who wish to be considered for the varsity band will perform the first, second, and third etudes
- 4) Percussionists will perform
 - a. A combination of snare rudiments, mallet etudes, and snare etudes. See the attached music for details.

Q: What if I can't play that stuff?

A: Practice makes perfect! Ask for help from teachers, 8th graders, and peers. Do your absolute best and try your hardest. We want to hear what you can do so that we place you in a group where you can grow as a musician.

Q: How many bands are there at Westwood?

A: There are three bands: Wind Symphony, Symphonic Band, and Concert Band. All three bands perform concerts, play at pep rallies and football games, and go to contests. You will be placed in a band based on your audition and your progress throughout the whole year. When selecting your band placement, directors want to ensure that students are in a group where they will feel successful and can learn in a suitable environment for their personal growth.

Q: How do I audition if I am an incoming magnet student?

A: If you are not a student at one of our elementary schools (Northwood Hills, Spring Creek, Hamilton Park, Spring Valley, or Carolyn Bukhair) then you will audition between 4:00 and 5:00 on Tuesday, May 9th at Westwood Junior High School (7630 Arapaho Rd., Dallas, TX, 75248). Please enter through the exterior band hall doors on the east side of the school near the big parking lot and the track. There are music notes on the door and letters that say "band hall" on the brick wall.



Flute

ADDITIONAL ETUDES

Etude 1- required for 6th & 7th grade

♩ = 100

Musical notation for Etude 1, Flute part. The piece is in 4/4 time with a key signature of two flats (B-flat and E-flat). The tempo is marked as ♩ = 100. The notation consists of two staves. The first staff contains four measures: a quarter note G4, a quarter note A4, a half note B-flat4, and a quarter note G4. The second staff contains four measures: a quarter note F4, a quarter note G4, a half note A4, and a quarter note G4. The piece concludes with a double bar line.

Etude 2- required for 7th grade & those interested in making Symphonic Band or Wind Symphony

♩ = 95

Musical notation for Etude 2, Flute part. The piece is in 4/4 time with a key signature of two flats. The tempo is marked as ♩ = 95. The notation consists of two staves. The first staff begins with a dynamic marking of *f* and contains four measures of music. The second staff begins with a dynamic marking of *p* and contains four measures of music, ending with a dynamic marking of *f*. The piece concludes with a double bar line.

Etude 3- required for those interested in making Wind Symphony

♩ = 120

Musical notation for Etude 3, Flute part. The piece is in 4/4 time with a key signature of two flats. The tempo is marked as ♩ = 120. The notation consists of two staves. The first staff begins with a dynamic marking of *f* and contains four measures of music. The second staff begins with a dynamic marking of *p* and contains four measures of music, ending with a dynamic marking of *f*. The piece concludes with a double bar line.

Oboe

ADDITIONAL ETUDES

Etude 1- required for 6th & 7th grade

♩ = 100



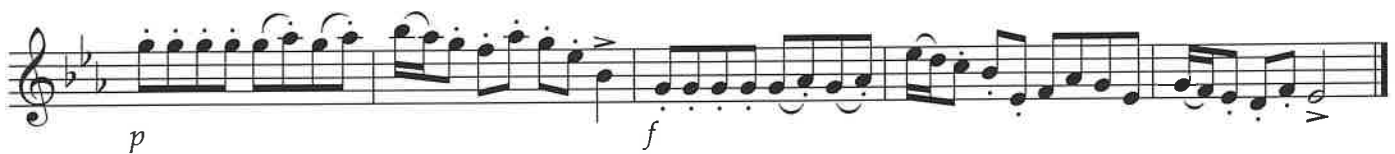
Etude 2- required for 7th grade & those interested in making Symphonic Band or Wind Symphony

♩ = 95



Etude 3- required for those interested in making Wind Symphony

♩ = 120



Clarinet in B \flat

Audition Etudes

Etude 1- required for 6th & 7th grade

$\text{♩} = 100$

Musical notation for Etude 1, measures 1-8. The piece is in 4/4 time. The first staff contains measures 1-4, and the second staff contains measures 5-8. The melody consists of eighth and quarter notes, with a final quarter rest in measure 8.

Etude 2- required for 7th grade & those interested in making Symphonic Band or Wind Symphony

$\text{♩} = 95$

Musical notation for Etude 2, measures 1-8. The piece is in 4/4 time. The first staff contains measures 1-4, and the second staff contains measures 5-8. The melody features a dynamic range from *p* (piano) to *f* (forte). A crescendo hairpin is shown in measure 4, and a decrescendo hairpin is shown in measure 8.

Etude 3- required for those interested in making Wind Symphony

$\text{♩} = 120$

Musical notation for Etude 3, measures 1-8. The piece is in 4/4 time. The first staff contains measures 1-4, and the second staff contains measures 5-8. The melody is characterized by eighth-note patterns and includes dynamic markings of *f* (forte) and *p* (piano). Accents are placed over several notes in both staves.

Alto Saxophone

Audition Etudes

Etude 1- required for 6th & 7th grade

♩ = 100

Musical notation for Etude 1, consisting of two staves of music in 4/4 time with a key signature of one sharp (F#). The first staff contains four measures of music, and the second staff contains four measures, ending with a double bar line.

Etude 2- required for 7th grade & those interested in making Symphonic Band or Wind Symphony

♩ = 95

Musical notation for Etude 2, consisting of two staves of music in 4/4 time with a key signature of one sharp (F#). The first staff starts with a forte (*f*) dynamic and ends with a hairpin. The second staff starts with a piano (*p*) dynamic and ends with a forte (*f*) dynamic.

Etude 3- required for those interested in making Wind Symphony

♩ = 120

Musical notation for Etude 3, consisting of two staves of music in 4/4 time with a key signature of one sharp (F#). The first staff starts with a forte (*f*) dynamic and ends with a hairpin. The second staff starts with a piano (*p*) dynamic and ends with a forte (*f*) dynamic.

Bassoon

Audition Etudes

Etude 1- required for 6th & 7th grade

♩ = 100

Two staves of musical notation for Etude 1. The first staff begins with a bass clef, a key signature of two flats (B-flat and E-flat), and a 4/4 time signature. The melody consists of quarter notes and eighth notes, with a slur over the final two measures. The second staff continues the melody with eighth notes and quarter notes, ending with a double bar line.

Etude 2- required for 7th grade & those interested in making Symphonic Band or Wind Symphony

♩ = 95

Two staves of musical notation for Etude 2. The first staff starts with a bass clef, a key signature of two flats, and a 4/4 time signature. It features a dynamic marking of *f* (forte) and a crescendo hairpin. The second staff continues the piece with a dynamic marking of *p* (piano) at the beginning and *f* at the end, with a long horizontal line underneath indicating the dynamic range.

Etude 3- required for those interested in making Wind Symphony

♩ = 120

Two staves of musical notation for Etude 3. The first staff begins with a bass clef, a key signature of two flats, and a 4/4 time signature. It features a dynamic marking of *f* (forte) and a series of eighth-note patterns. The second staff continues with similar eighth-note patterns and includes a dynamic marking of *p* (piano) at the start and *f* at the end.

Trumpet in B \flat

AUCTION ETUDES

Etude 1- required for 6th & 7th grade

$\text{♩} = 100$

The first staff of music for Etude 1 consists of four measures. The first measure contains a quarter note G4, a quarter note A4, and a half note B4. The second measure contains a quarter note C5, a quarter note B4, and a half note A4. The third measure contains a quarter note G4, a quarter note F4, and a half note E4. The fourth measure contains a quarter note D4, a quarter note C4, and a half note B3. The second staff of music consists of four measures. The first measure contains a quarter note G4, a quarter note A4, and a quarter note B4. The second measure contains a quarter note C5, a quarter note B4, and a quarter note A4. The third measure contains a quarter note G4, a quarter note F4, and a quarter note E4. The fourth measure contains a quarter note D4, a quarter note C4, and a quarter note B3.

Etude 2- required for 7th grade & those interested in making Symphonic Band or Wind Symphony

$\text{♩} = 95$

The first staff of music for Etude 2 consists of four measures. The first measure contains a quarter note G4, a quarter note A4, and a quarter note B4. The second measure contains a quarter note C5, a quarter note B4, and a quarter note A4. The third measure contains a quarter note G4, a quarter note F4, and a quarter note E4. The fourth measure contains a quarter note D4, a quarter note C4, and a half note B3. The second staff of music consists of four measures. The first measure contains a quarter note G4, a quarter note A4, and a quarter note B4. The second measure contains a quarter note C5, a quarter note B4, and a quarter note A4. The third measure contains a quarter note G4, a quarter note F4, and a quarter note E4. The fourth measure contains a quarter note D4, a quarter note C4, and a quarter note B3. The first measure of the first staff is marked with a forte *f* dynamic. The first measure of the second staff is marked with a piano *p* dynamic. The fourth measure of the second staff is marked with a forte *f* dynamic.

Etude 3- required for those interested in making Wind Symphony

$\text{♩} = 120$

The first staff of music for Etude 3 consists of four measures. The first measure contains a quarter note G4, a quarter note A4, and a quarter note B4. The second measure contains a quarter note C5, a quarter note B4, and a quarter note A4. The third measure contains a quarter note G4, a quarter note F4, and a quarter note E4. The fourth measure contains a quarter note D4, a quarter note C4, and a quarter note B3. The second staff of music consists of four measures. The first measure contains a quarter note G4, a quarter note A4, and a quarter note B4. The second measure contains a quarter note C5, a quarter note B4, and a quarter note A4. The third measure contains a quarter note G4, a quarter note F4, and a quarter note E4. The fourth measure contains a quarter note D4, a quarter note C4, and a quarter note B3. The first measure of the first staff is marked with a forte *f* dynamic. The first measure of the second staff is marked with a piano *p* dynamic. The third measure of the second staff is marked with a forte *f* dynamic.

Trombone
Euphonium

Audition Etudes

Etude 1- required for 6th & 7th grade

♩ = 100

Etude 1 musical notation, two staves in bass clef, 4/4 time, key of B-flat major. The first staff contains four measures of music, including a slur over the last two measures. The second staff contains four measures of music, ending with a double bar line.

Etude 2- required for 7th grade & those interested in making Symphonic Band or Wind Symphony

♩ = 95

Etude 2 musical notation, two staves in bass clef, 4/4 time, key of B-flat major. The first staff starts with a dynamic marking of *f* and ends with a hairpin. The second staff starts with a dynamic marking of *p* and ends with a dynamic marking of *f*.

Etude 3- required for those interested in making Wind Symphony

♩ = 120

Etude 3 musical notation, two staves in bass clef, 4/4 time, key of B-flat major. The first staff starts with a dynamic marking of *f*. The second staff starts with a dynamic marking of *p* and has a dynamic marking of *f* later in the piece.

Tuba

Audition Etudes

Etude 1- required for 6th & 7th grade

♩ = 100

Etude 1 musical notation, consisting of two staves in bass clef, 4/4 time, with a key signature of one flat. The first staff contains a sequence of eighth and quarter notes. The second staff contains a sequence of eighth notes and quarter notes, ending with a double bar line.

Etude 2- required for 7th grade & those interested in making Symphonic Band or Wind Symphony

♩ = 95

Etude 2 musical notation, consisting of two staves in bass clef, 4/4 time, with a key signature of one flat. The first staff starts with a forte (*f*) dynamic and ends with a decrescendo hairpin. The second staff starts with a piano (*p*) dynamic and ends with a crescendo hairpin to a forte (*f*) dynamic.

Etude 3- required for those interested in making Wind Symphony

♩ = 120

Etude 3 musical notation, consisting of two staves in bass clef, 4/4 time, with a key signature of one flat. The first staff starts with a forte (*f*) dynamic and includes accents (>) over several notes. The second staff starts with a piano (*p*) dynamic and includes accents (>) over several notes.